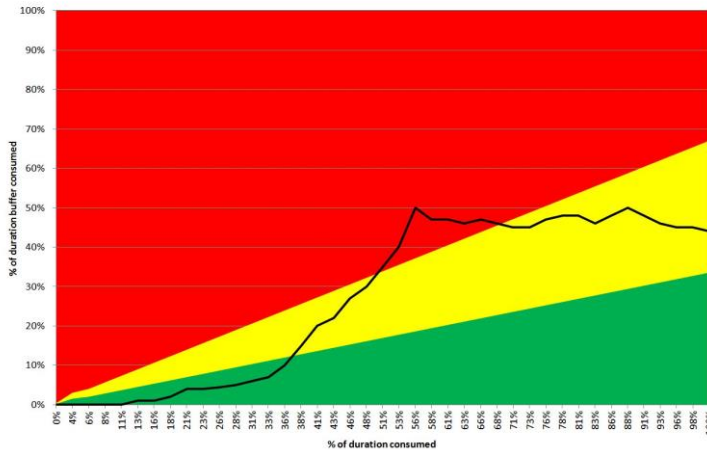


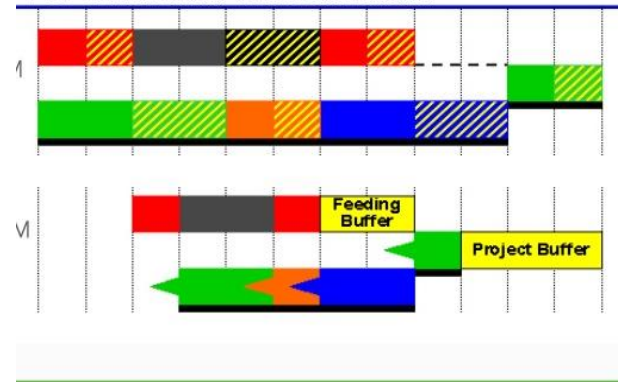
Innovative Project Management

Completing Project on Time, Within Budget and Deliver in Full (Part I)

Duration Fever Chart



Project Scheduling for the single project
... The Critical Chain Schedule



Who Should Attend?

- Executives for whom project management is part of their duties.
- Project directors/managers, resources manager, task managers.
- Engineers of infrastructure, civil and building engineering.
- Professionals for product development, software development, supply chain and services projects, engineering-to-order, major assembly production, maintenance, repair and overall.

Introduction

The Critical Chain Project Management (CCPM) is the technology that has the power to improve dramatically the performance of project of all type in companies of all size.

Thousands of organizations have implemented CCPM successfully and in particular the Japanese Government announcement in 2007 via the launch of the “Win-Win-Win Public Work Reform” that CCPM should be used on all Government’s constructions projects henceforth (approx. 20,000 projects per year):

“We strongly remind ourselves of the very important responsibility of public works to secure people's safety and national land safety. To bring out maximum benefit for society, both government officials and contractors work together on public works by providing better products with faster speed. This brings benefits to all of residence, government and contractors and support to overcome financial difficulty of Japan Government. We declare herewith we strongly advance Win-Win-Win Public Work Reform.”

The successful experiences from leading organizations throughout the world have demonstrated that CCPM is the most cost savings and profit-generating device for the project's organization.

Time

11 Sep 2020 (Friday)

9:30am - 5:00pm

Course Code:

CCPM-20SEP11F

Venue:

Unit 1627 Star House, Middle Block, 3 Salisbury Road, Tsim Sha Tsui, Kowloon, Hong Kong

Language

Cantonese with English Handouts

Fee

HKD2,290

(Complimentary Lunch included)

15% off - Group Enrolment:

Two or more participants from the same company.

Enquiry

Tel: 2581 2771

Email: info@ssi.org.hk

Objective:

Facilitated by certified CCPM expert, the workshop covers the concept, methodology, case examples. The new techniques will be illustrated by computer simulation. The workshop covers CCPM scheduling, tracking and project management by the CCPM software, LYNX.

The aim to help participating organizations apply this new technique immediately for rapid results.

Contents:

- Current issues of project management
- Solution to overcome current issues
- Comparison of Current and New Methods
- CCPM Scheduling for Single Projects
- Exercise
- Computer Simulation
- Project Tracking and Monitoring
- 9-steps of CCPM implementation
- Introduction to LYNX Project management Software
- Major features of the LYNX Software
- Case Examples
 1. Construction of High-speed Railway Station
 2. An ERP Implementation project
 3. A set of huge city-wide construction and renovation projects for European Football games

Expected Results:

Upon completion of the course, participants should:

1. Grasp the breakthrough approach and be able to implement it to complete a trial project.
2. Apply the new approach using CCPM software LYNX for rapid and dramatic results
3. Successful implementation showed result in the establishment of more and more high-performance organization.

Facilitators:

Ir. Dr. YK Chan, Postdoc, EngD, DMgt, RE, FHKIE, RLS, RSSMBB, Certified CCPM Practitioner

Mr. Anthony KC Chan, MEM, MPA, RSSMBB, FHKQMA, LYNX Implementation Expert

Enquiry

Tel: 2581 2771 Email: info@ssi.org.hk

Organizers:



The Six Sigma Institute



SBTI-HK

Enrollment Link:

